

SERIES L3D

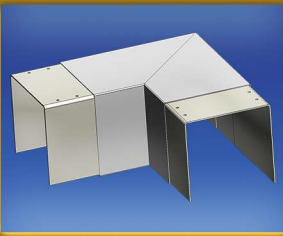
DESIGNED FOR
LED_s

Snap-in Durayl® LED Acrylic Diffuser

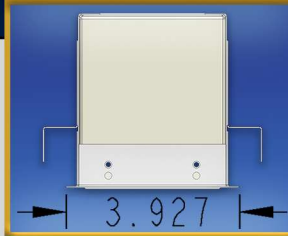
Joiner Band/Support Bracket
Allows Continuous Runs



90° Joiner Allows Square
and Rectangle Assemblies



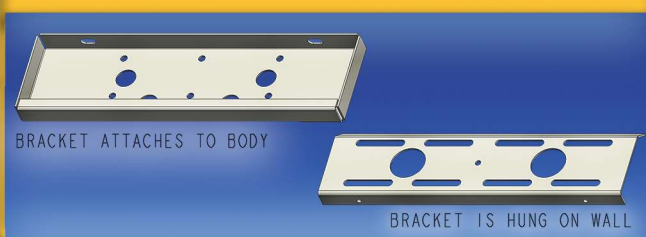
T-Grid P.P.W. (4")



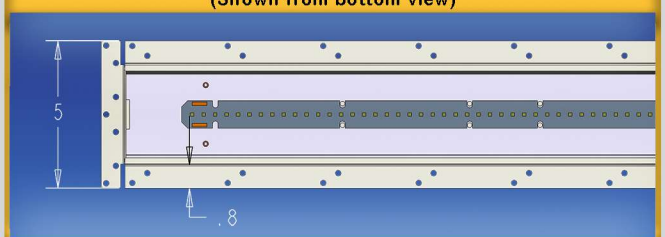
Trim/Flange Kits
(Custom Kits Available)



Wall Mount Bracket Allows Vertical Surface Mounting



Galvanized Mud Kits
(Shown from bottom view)



Application

- Surface/Suspended
- Recessed
- Wall Mount
- Square/Rectangle (90° corner joiners)

Finishes

- Bare (customer to source local finishing)
- Post-powder coat - contact AMP
- Pre-paint White

Features

- 4' (46", 48"), 8' (92", 96") Standard Lengths (or custom lengths available upon request)
- Contact AMP if using continuous runs
- Can accommodate (1) or (2) row LED board
- Can accommodate (1) or (2) LED T-5 or T-8 lamps

LED & Lamping

- LED Boards (1 or 2 row per length)
- T5 (1 or 2 lamp per length)
- T8 (1 or 2 lamp per length)
- T8 is eligible for retro kit rebate programs

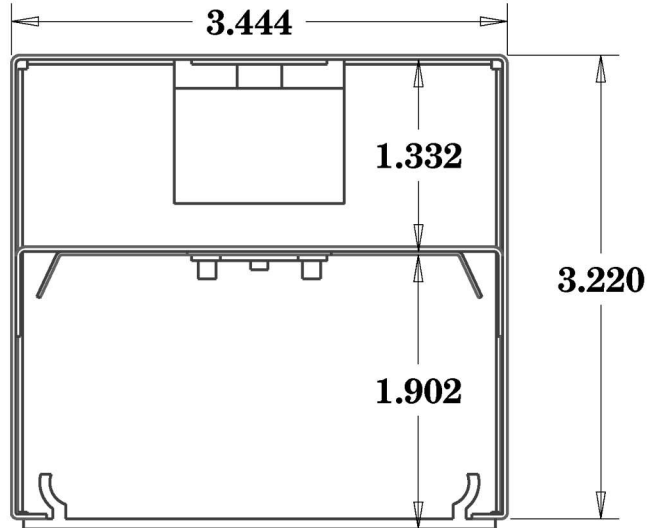
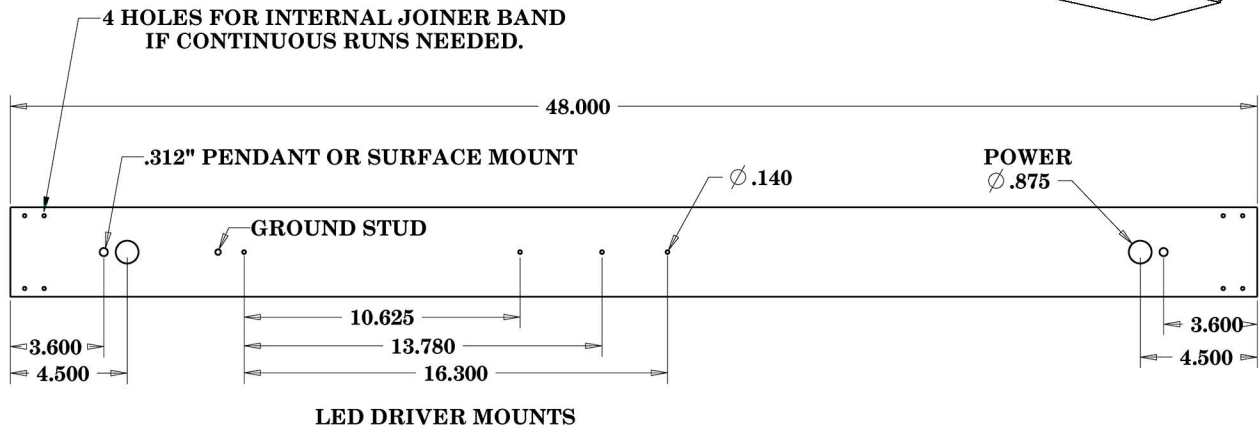
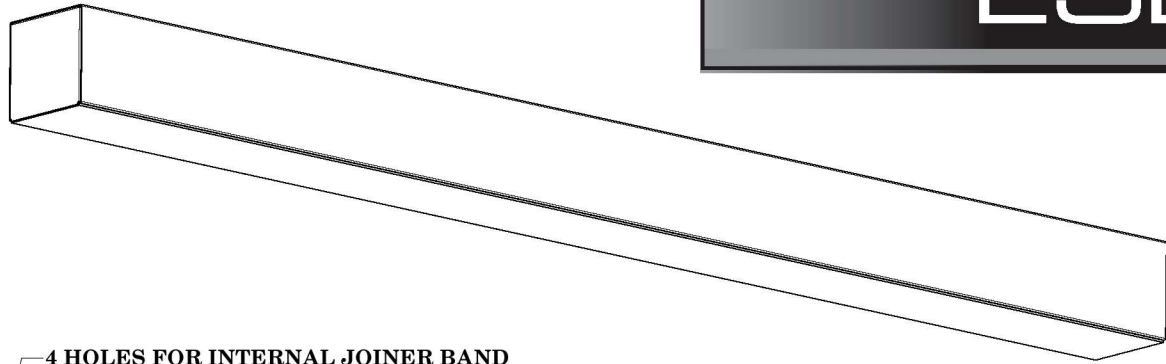
Specifications subject to change without notice.



Adam Metal Products Company • P.O. Box 450 • Ledgewood, NJ • 07852
Phone: 973.770-1100 • Fax 973.770-1105 • www.adammetal.com



SERIES L3D



LED/LAMPING

| LED BOARDS | LED T5 | LED T8 |
|-----------------|---------------------------|---------------------------|
| 4' (46" or 48") | 4' (46") 1 or 2 lamps | 4' (48") 1 or 2 lamps |
| 8' (92" or 96") | 8' (92") 2 or 4 lamps (T) | 8' (96") 2 or 4 lamps (T) |

(T) Tandem

Specifications subject to change without notice.
Rev 2-6-2020



Adam Metal Products Company • P.O. Box 450 • Ledgewood, NJ • 07852
Phone: 973.770-1100 • Fax 973.770-1105 • www.adammetal.com

