

SERIES 692



OPTIONS

SYMMETRICAL REFLECTOR



ASYMMETRICAL REFLECTOR



OPTIONS

Application

- Cove Lighting
- Store Fixture
- Signage
- Display
- Vending Machines
- Slot Lighting

Finishes Available

- White

Diffuser

- None

Optional Features

- Symmetrical and asymmetrical reflectors in enhanced aluminum or standard pre-painted white.
- Mounting tabs
- Side lamps for T-5 & T-8
- Micro Inter Connect ready when ends ordered with 5/8" DD K.O.s

Custom modifications in the physical specification and color are available for this fixture.

Features

- Body houses all wiring and components for ease of installation
- Cover/lid fastens with a lance and one screw, no components
- Optional reflectors can be used with or without cover/lid
- Body has end holes for joining together with screws
- Push-up Sockets

Lamping Options

T8	T5	T5 HO
(2) 15W	(2) 14W	(2) 24W
(2) 17W	(2) 21W	(2) 39W
(2) 25W	(2) 28W	(2) 54W
(2) 32W	(4) 21W (T)*	(4) 39W (T)*
(4) 25W (T)*	(4) 28W (T)*	(4) 54W (T)*
(4) 32W (T)*		

* available as special order (T) Tandem

T-5 or T-8 single lamp available as special order.

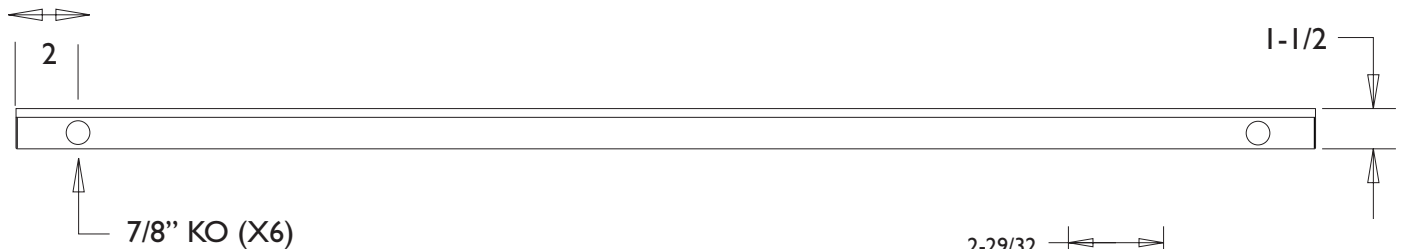
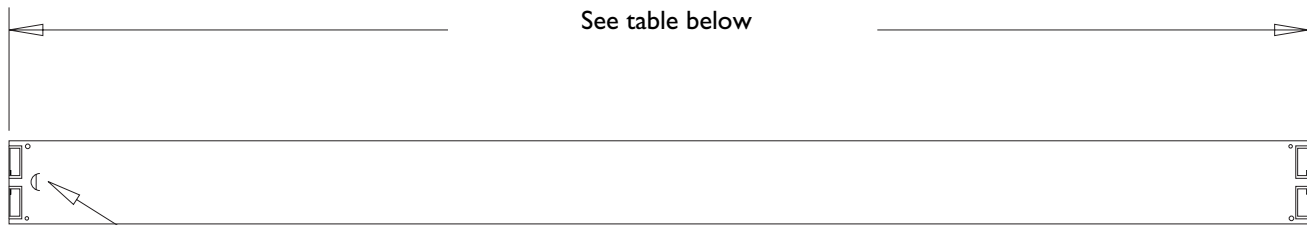
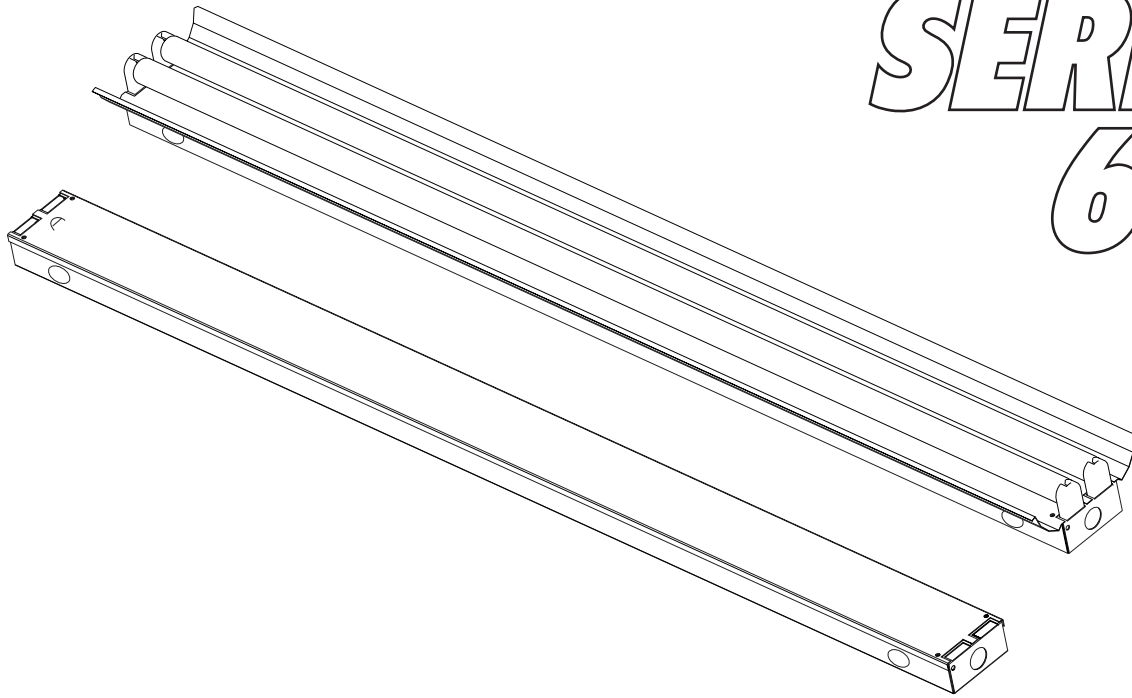
T-12 available in equivalent T-8 sizes.

Other lamp configurations possible. Check with factory.

Packaging	14W	15W	17W	21W	24W
Bodies	10	10	10	10	10
	25W	28W	32W	39W	54W
Bodies	10	10	10	10	10

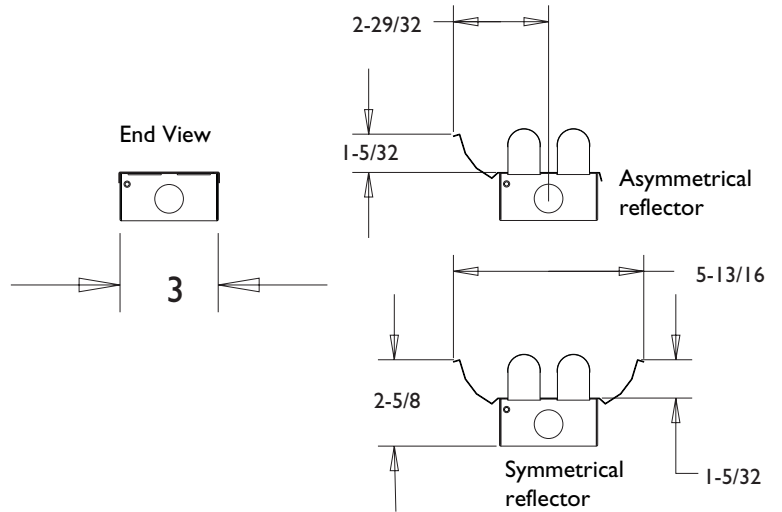


SERIES 692



T5	
SIZE	LENGTH
(2) 14W	22-7/16
(2) 21W	34-9/32
(2) 28W	46-1/16

T8	
SIZE	LENGTH
(2) 15W	18
(2) 17W	24
(2) 25W	36
(2) 32W	48



T-5 or T-8 single lamp available as special order.
T-12 available in equivalent T-8 sizes.

REV 1-22-08

