

# SERIES 202 LED



Two row LED board configuration with Mouse Hole Ends



Shown with tapped hole and optional T-5 Lamps



Optional Motion and Sound Detector



DESIGNED FOR  
**LED<sub>s</sub>**

## Application

- Wall or ceiling in corridors, stairwells and bathrooms
- ADA Compliant - less than 4" off wall.

## Finishes

- White
- All ends white powder coated

## Diffuser

- Acrylic Durayl® LED Smooth White - standard
- Acrylic - Smooth White - optional

## Optional Features

- Slide-on and mouse hole ends available.
- Baffles and dividers are available for up, down, and/or front light.
- Ends with tapped holes to accommodate tamper-proof or regular screws.
- LED board custom layout

Custom modifications in the physical specification and color are available for this fixture.

## LAMPING OPTIONS

LED	T5
(1 or 2) 22" Boards (2 or 4) 22" Boards	(1 or 2) 14W (1 or 2) 21W* (1 or 2) 28W

\*Special order

## PACKAGING

	24"	46"	14W	21W	28W
BODIES	12	12	12	12	12
DIFFUSERS	12	12	12	12	12

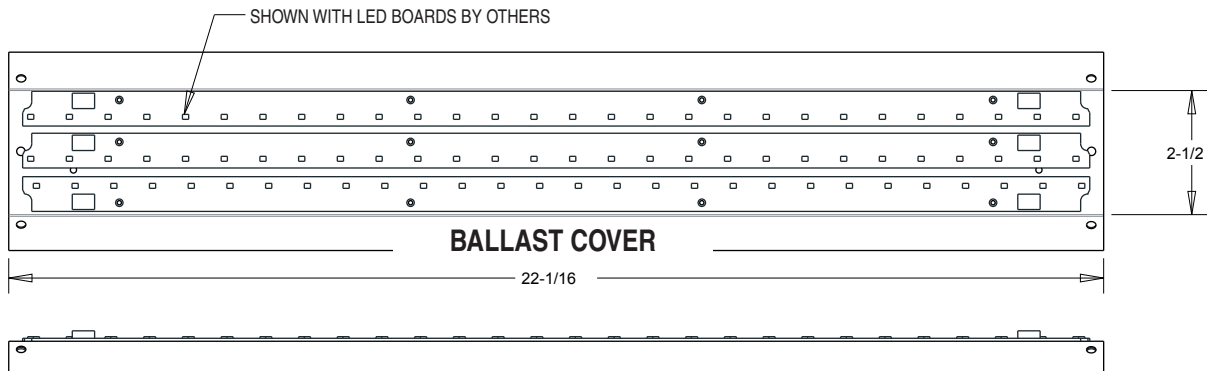
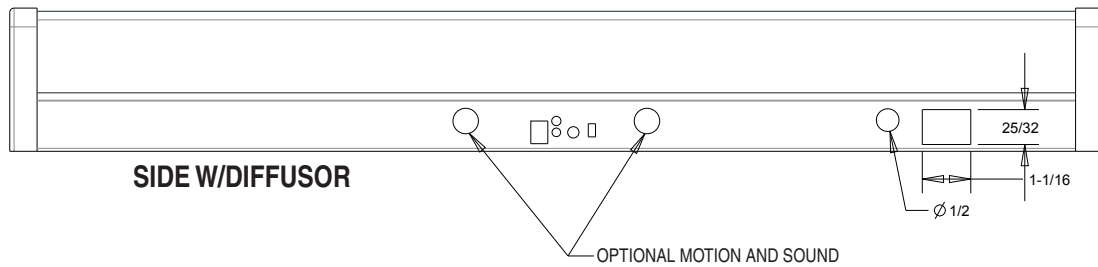
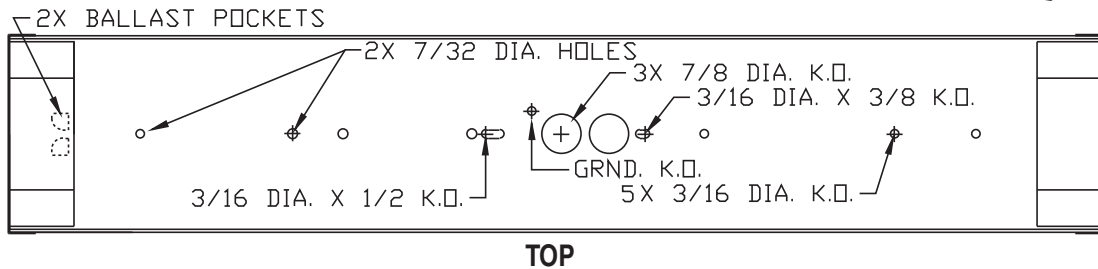
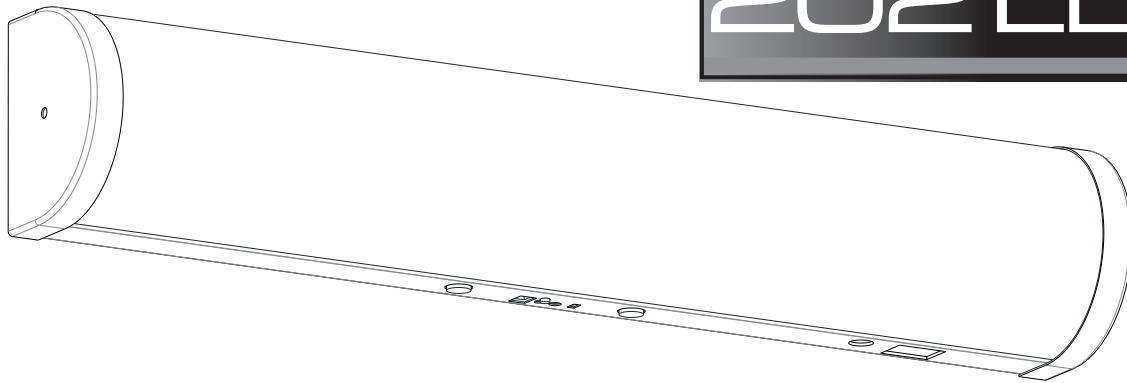
Specifications subject to change without notice.  
Durayl® is a trademark of Pexco



Adam Metal Products Company • P.O. Box 450 • Ledgewood, NJ • 07852  
Phone: 973.770-1100 • Fax 973.770-1105 • www.adammetal.com

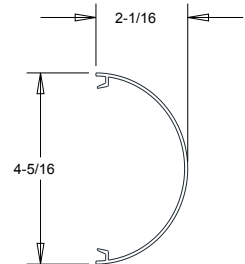
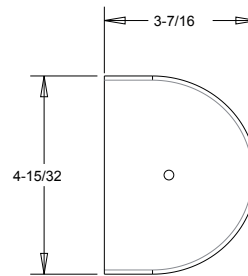


# SERIES 202 LED



T5	
SIZE	LENGTH
(1 or 2) 14W	22 5/8
(1 or 2) 21W*	34 7/16
(1 or 2) 28W	46 1/4

LED	
SIZE	LENGTH
(1 or 2) 22" Boards	24 1/4
(2 or 4) 22" Boards	46 1/4



\* Special order

Specifications subject to change without notice.

REV 5-18-2016

**MADE IN THE  
US**

Adam Metal Products Company • P.O. Box 450 • Ledgewood, NJ • 07852  
Phone: 973.770-1100 • Fax 973.770-1105 • www.adammetal.com

