

SERIES 102

DESIGNED FOR
LED_s

Slide-On Ends w/
New Screw-on Cover



Application

- Wall or ceiling mounted
- Bath bracket

Finishes

- Bright Anodized Aluminum (BAA)
- White

Diffuser Options

- Acrylic - Ribbed White

Features

- Knockout for C.O. and switch
- Custom modifications in the physical specification and color are available for this fixture.

LED/LAMPING

LED Boards	T8	CFL
(1 or 2 row) 24"	(1) 15w	(1) 13w (12")*
(2 or 4 row) 48"	(1) 17w	(1,2) 13w (18")*
	(1) 25w	(2,3) 13w (24")*
	(1) 32w	

*Special Order

PACKAGING

	15w	17w	24"	25w	32w	48"
Bodies	24	24	24	12	12	12
Diffusers	96	96	96	48	48	48

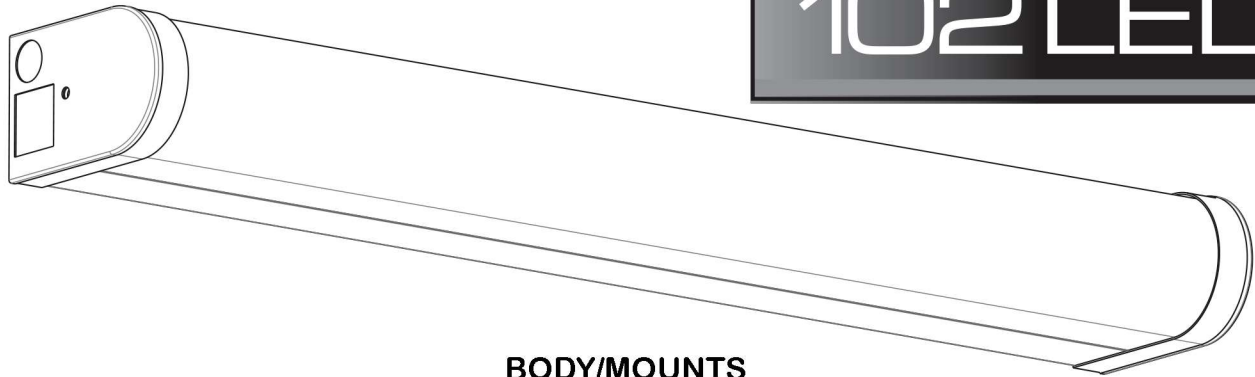
Specifications subject to change without notice.



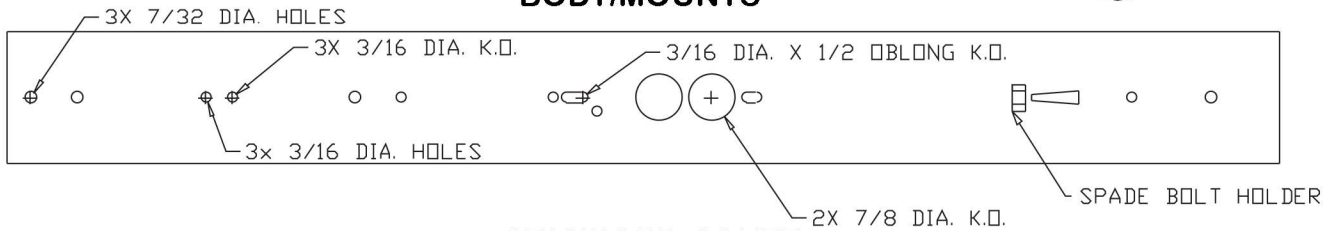
Adam Metal Products Company • P.O. Box 450 • Ledgewood, NJ • 07852
Phone: 973.770-1100 • Fax 973.770-1105 • www.adammetal.com



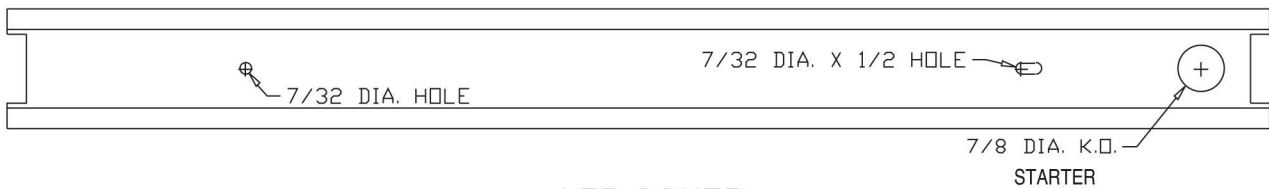
SERIES 102 LED



BODY/MOUNTS

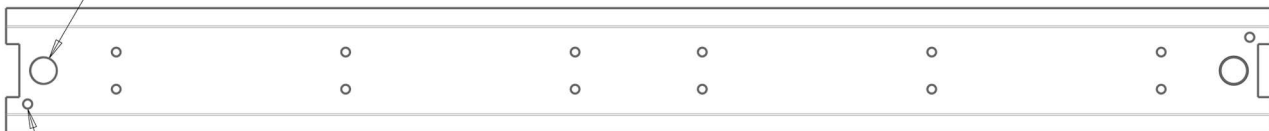


STANDARD COVER



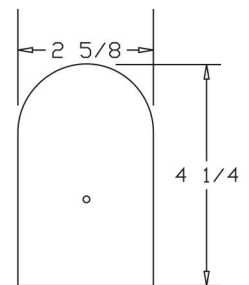
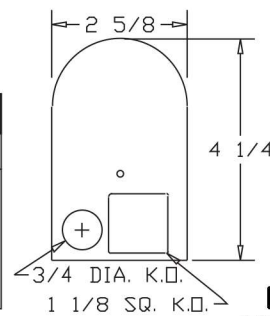
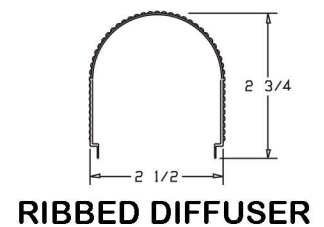
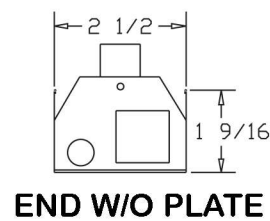
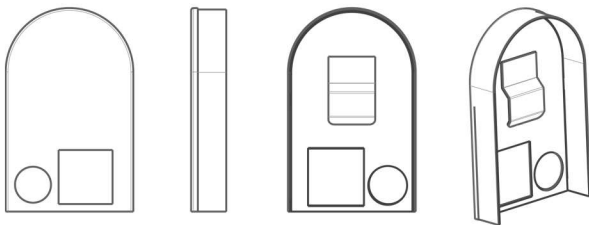
SMOOTH WIREWAY

LED COVER



SCREW HOLES FOR ATTACHING COVER TO BODY

(OPTIONAL) 102 SLIDE ON END CAP



STANDARD PAIR IS ONE PLAIN AND ONE WITH KOs

T8	
SIZE	LENGTH
(1) 15W	18 1/4
(1) 17W	24 1/4
(1) 25W	36 1/4
(1) 32W	48 1/4

LED	
SIZE	LENGTH
(1 or 2 row) 24"	24 1/4
(2 or 4 row) 48"	48 1/4

*Special order

Specifications subject to change without notice.

Rev 3-3-20



Adam Metal Products Company • P.O. Box 450 • Ledgewood, NJ • 07852
 Phone: 973.770-1100 • Fax 973.770-1105 • www.adammetal.com

